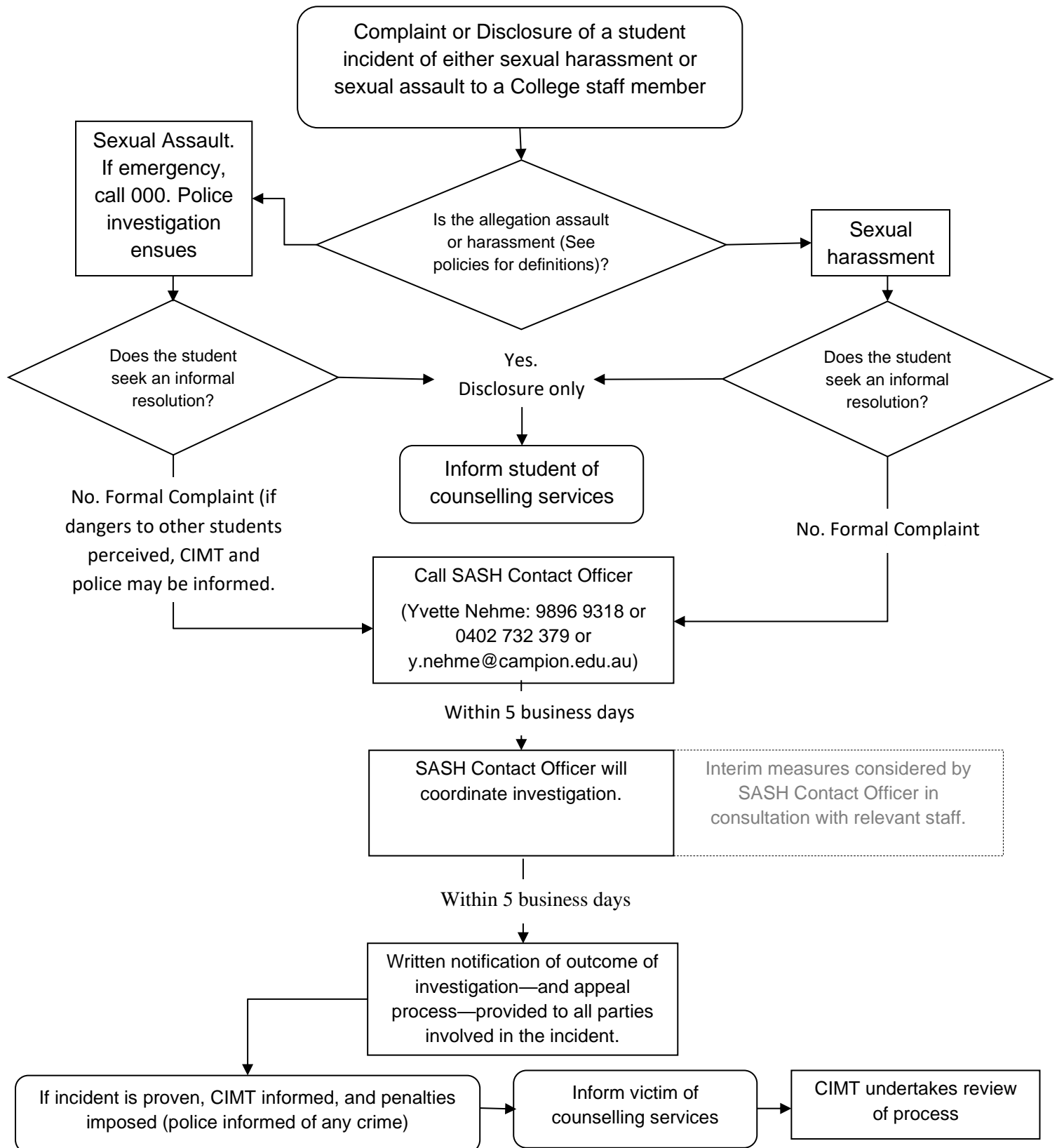


Flowchart: Responding to a report of student sexual assault or harassment

This flowchart is for guidance only for Campion staff. Please refer to the relevant policies for further details (especially SASH Policy & Procedure; Critical Incident Policy & Procedure; Student Misconduct Procedures; Student Code of Conduct; Staff Code of Conduct).



*Critical Incident Management Team